

# MONTHLY MEMBERSHIP PROGRESS REPORT

LOCATION INDIA

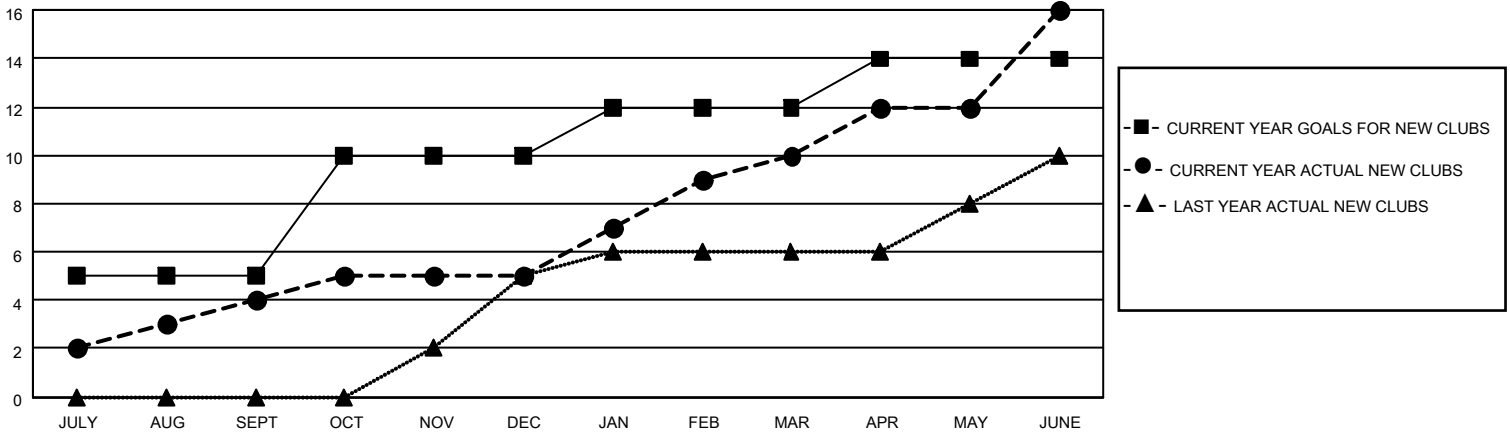
District 3234D1

Results as of: 6/30/2022

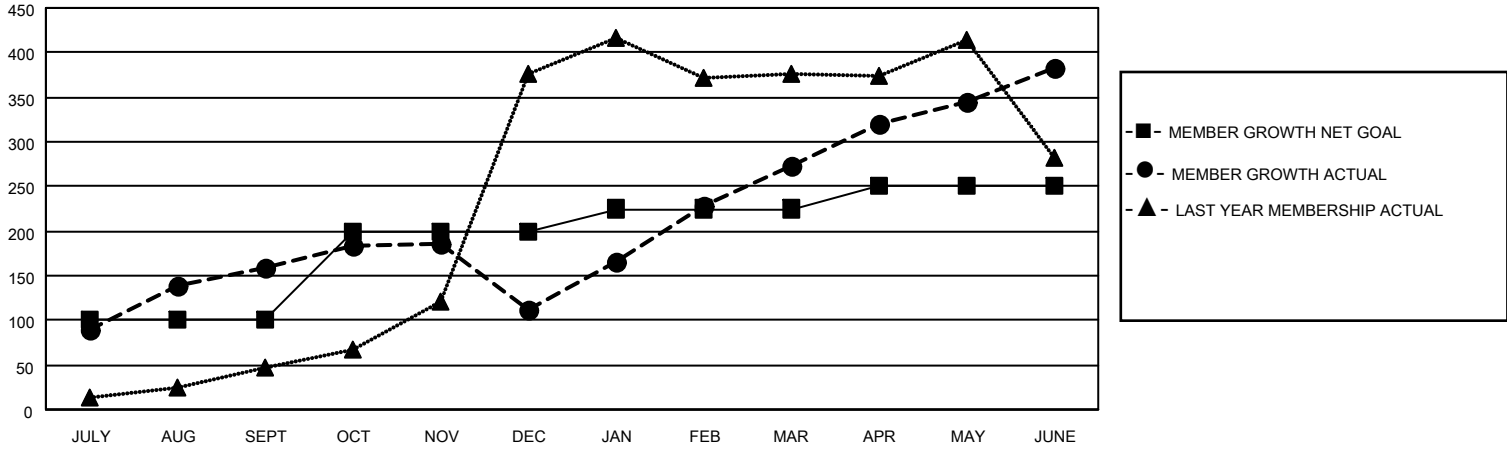
Clubs			
RESULTS FOR 2021-2022			
QUARTER	NEW CLUB GOAL	NEW CLUBS	DROPPED CLUBS
JULY/AUG/SEPT	5	4	0
OCT/NOV/DEC	5	1	3
JAN/FEB/MAR	2	5	0
APR/MAY/JUNE	2	6	2

Members			
RESULTS FOR 2021-2022			
QUARTER	MEMBER GROWTH NET GOAL	MEMBER GROWTH ACTUAL	DROPPED MEMBERS ACTUAL (including transfers)
JULY/AUG/SEPT	100	194	32
OCT/NOV/DEC	100	45	91
JAN/FEB/MAR	25	211	13
APR/MAY/JUNE	25	349	235

**GOALS AND ACTUAL NEW CLUBS CUMULATIVE**



**GOALS AND ACTUAL MEMBERS CUMULATIVE**



**DROPPED CLUBS: 5**

62 CLUBS OF 84 ADDED 1 OR MORE NEW MEMBERS

**GENDER DISTRIBUTION**

MALE	2,037 (70.75%)
FEMALE	842 (29.25%)
NON BINARY	0 (0.00%)
PREFER NOT TO ANSWER	0 (0.00%)

**DROPPED MEMBERS**

[CLICK HERE FOR CUMULATIVE MEMBERSHIP DATA](#)

DECEASED	14
CLUB CANCELLED	84
OTHER	273
<b>TOTAL</b>	<b>371</b>

TOTAL FAMILY UNIT MEMBERS 1,053

FAMILY MEMBERS PAYING HALF DUES 548